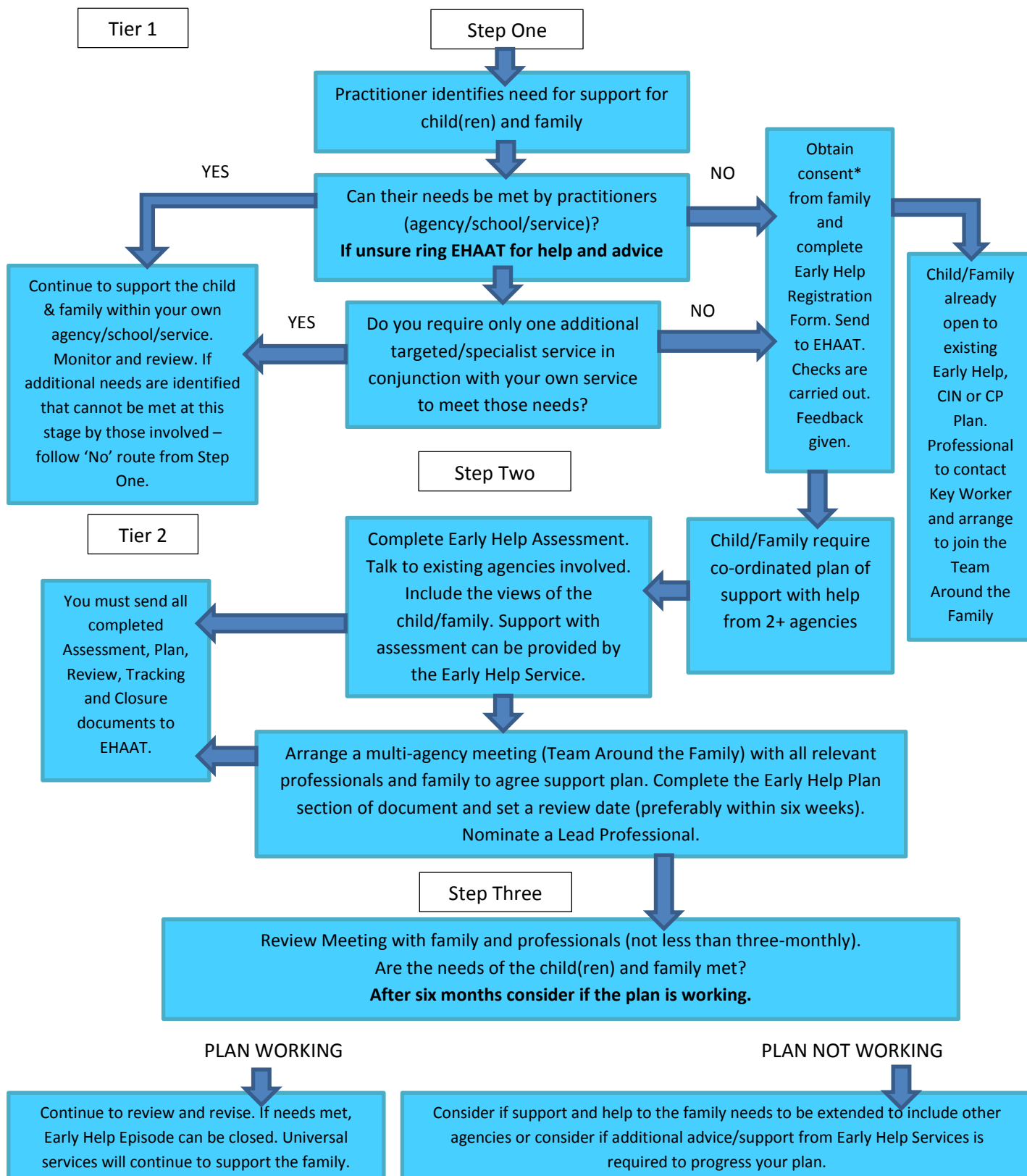


# Early Help Process

Contact the Early Help Advice and Allocations Team (EHAAT) for help and support at any time on:

Telephone: 0191 561 4084

E-mail: EHAAT@togetherforchildren.org.uk



Where **safeguarding** concerns exist for a child, or professionals are concerned about a lack of change in a family following a review, they should refer to the Threshold Guidance and speak to the Integrated Contact and Referral Team for advice and support from a Social Worker on 0191 561 7007

**\*If consent is difficult to obtain, discuss a different approach with your line-manager, or ring EHAAT for advice**